



Timber Nest Swing



Water Play & Hand Pump

ACCESSIBLE SPLASH PAD WITH SHADE SAIL

Splash pad area with small jet fountains for warmer weather. can be used for ball play in winter months. Shade sail for shade overhead

GRASSED ZONE

New synthetic grassed open zone for accessible movement and ball play and other activities needing more space. Garden bed under tree edged with rocks and logs for informal seating and musical Talk Tubes for sensory play

NON-CLIMBABLE STEEL SAFETY FENCE & SHRUB PLANTING

Non-climbable 1500mm high steel safety fence with vertical railings to enclose boundary of playspace. Low shrubs planted outside of fence line to enclose further from street edge. Fence to have decorative panel sections

SLIDE MOUND WITH DOUBLE SLIDE & OPEN CUBBY

New planted slide mound with 1200mm high double slide and rubber landing pad. Open timber cubby at top of mound to be accessed by tyre clamber and timber cleated log

DOUBLE SWING-SET WITH TIMBER FRAME

Double junior swing frame, with one toddler seat and one strap seat



Musical Chimes



Gum Nut Seat

GUM NUT & GUM LEAF SEATS

Install carved and painted 'themed' timber seats and bench for both adults and children

SHADE TREE PLANTING

Look to retain 5 existing trees onsite in their present location. Move one smaller specimen to new location within playspace area. Remove 3 smaller existing specimens off-site and relocate if possible.

AGILITY PLAY ZONE

Tree Climb Turnover Bars for upper body activity and climbing and Carousel and Dish Spinner for gentle rotating movement

MOSAIC PATHWAY ENTRY PANELS

Mosaic artwork embedded panels at inside entry points to playspace. Artwork to be created locally. Mosaics to be textured so as to not create slip hazards for pedestrians

REMOVE EXISTING CROSSOVER

Remove existing crossover to encourage pedestrian movement along new south-eastern footpath

LONG THEMED TUNNEL

A long free-standing themed tunnel for crawling through and supervisable quiet space. Tunnel with perspex 'see-through' panels in sections

ACCESSIBLE SECOND ENTRY

Secondary / alternate accessible entry gate to playspace with footpath access and self-closing safety gate

ADDITIONAL PICNIC AREA

Additional picnic table outside of playspace boundaries to also serve a function as broader civic space in central township

NEW FOOTPATH CROSSOVER

New footpath from secondary entry gate to connect to south-east car parking area



In-Ground Trampolines

ENCLOSED GRASSED ZONE IN PICNIC AREA

Low shrub planting to create a boundary for natural grassed area as spillout space for picnic facilities

WATER PLAY ZONE

Small water play zone with upright water trays, channels and decorative creek bed. Creek bed to have pumps (connected to mains or tank) to bring in water, gates to control the water flow and drainage connected to stormwater.

MAIN ENTRY GATES & ACCESSIBLE DRINKING FOUNTAIN

Main entry to playspace from picnic area, with two self-closing safety gates, one 1500mm wide. Accessible drinking fountain adjacent to main entry to service picnic area and playspace

NEW PICNIC SHELTER

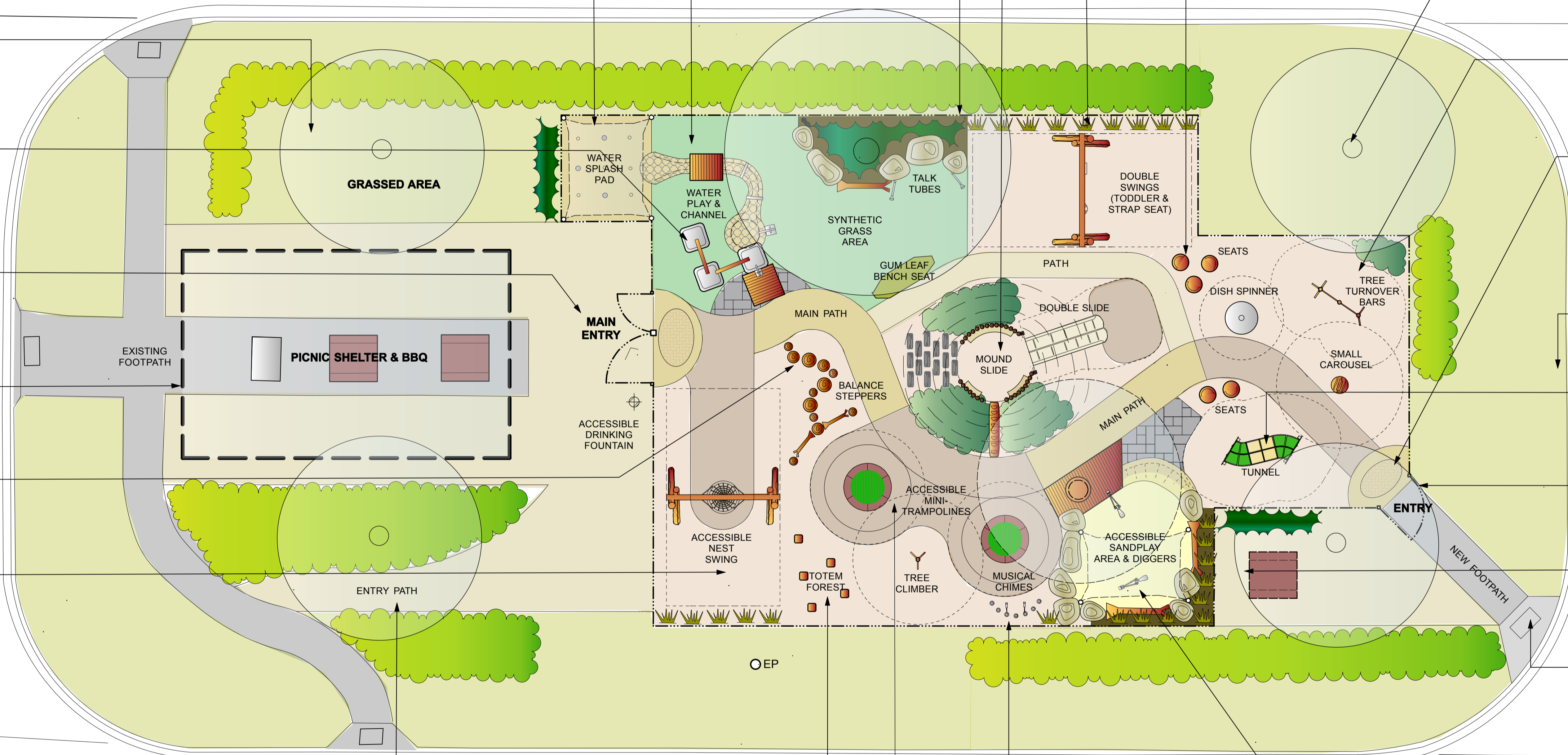
New architect designed picnic shelter over existing BBQ and picnic area. Design of shelter to be complemented by playspace materials and layout

LOG BALANCE WALK

Timber log steppers (550mm max) in a trail with horizontal logs for balance and movement skills

ACCESSIBLE TIMBER-FRAMED NEST SWING

Timber-framed nest / basket swing with single movement (back and forwards) and accessible rubber pad from main path underneath



LEGEND

- EXISTING TREE
- RELOCATED TREE
- SHRUBS
- GROUND COVER
- TUSsocks
- ORGANIC SOFTFALL MULCH
- GRANITIC GRAVEL
- GRASS (NATURAL)
- GRASS (SYNTHETIC)
- COLOURED CONCRETE
- SYNTHETIC RUBBER
- DECORATIVE FLAGSTONE PAVING
- WHITE-WASHED RIVER SAND
- ELECTRICITY POLE
- ACCESSIBLE DRINKING FOUNTAIN

Note: Images are look and feel only and not necessarily representative of exact final items. Design subject to change

NEW GRAVEL ENTRY PATH TO PICNIC AREA & PLAYSACE

New gravel toppings path to picnic and playspace area from south-west side of street, connecting with existing pedestrian footpath and crossover



Touchwood Totems

CARVED SENSORY TOUCH TOTEM FOREST

Five vertical timber carved totems with patterns, images and text for sensory experience and play



Tree Climber & Mound Slide

IN-GROUND ACCESSIBLE TRAMPOLINES & TREE CLIMB

Two in-ground circular trampolines with accessible rubber pad surrounds from main path. Timber agility tree climb equipment behind

UPRIGHT MUSICAL CHIMES

Musical sensory activity with upright stainless steel tuned musical chimes and fixed rubber padded beaters for a gentle chiming sound

ACCESSIBLE SANDPLAY ZONE

Accessible apron to sandplay area and adjacent deck with accessible sand digger. Sandplay area to be a more natural setting with rock and log edging and a second sand digger with a seat

DRAFT

Issue	Amendment	Date	Bricolage Landscape Design		Date: June 2018	Scale: 1:100 @ A1	North:	AVOCA INCLUSIVE PLAYSACE		Sheet:
A			Suite 6 / 655 Mountain Highway, Bayswater VIC 3153		Drawn: EC			PYRENEES SHIRE		1 of 1
B			Tel: 0447 622 587		Approved: EC			High Street, Avoca VICTORIA		in this set
C			Email: elizabeth@bricolage.design.com.au		This drawing is a concept design drawing only, not a working drawing and is not to be used for construction purposes. The drawing is copyright and remains the property of the landscape architect					
								DRAFT CONCEPT DESIGN PLAN		Dwg No: 151-CP-01