

Stronger Together, shaping Tomorrow



Pyrenees
Shire Council

**Council Plans
and Budget Summary**

May 2025

Our Vision

COUNCIL'S VISION 2025-2029

Our Vision is for a vibrant shire where economic growth and innovation go hand-in-hand supporting key industry sectors, the natural environment and small-town sustainability.

We put our Pyrenees communities at the centre of all decision-making. Through our focus on wellbeing, community connections, and supporting all life stages, we aim to create vibrant, resilient communities where visitors and residents want to live, invest, and thrive.

Our Planning

Council has reviewed and developed the following Council documents which guide and inform our shared direction:

Annual Budget 2025-26

Outlines the projected income and expenditure of council for the financial year.

Council Plan 2025-29

Reflects the major challenges facing council and community, and the priorities and initiatives that will help us continue improving our region.

10-year Financial Plan

A long-term strategic financial document that supports the aspirations of the Council Plan 2025-29 and details how council intends to manage its finances over the coming decade.

Revenue and Rating Plan

Determines the most appropriate and affordable revenue and rating approach for Pyrenees Shire Council that, in conjunction with other income sources, will adequately finance the objectives in the Council Plan.

Community Vision 2021-2031 review

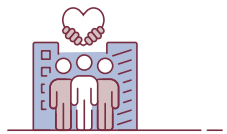
Pyrenees Shire Council is currently reviewing its Community Vision and thanks residents who participated in the community engagement process.

Municipal Health and Wellbeing Plan 2025-2029

Sets priorities and goals to improve, promote and protect the health and wellbeing of our community and help shape our future.

STRATEGIC Priorities

Our Pillars



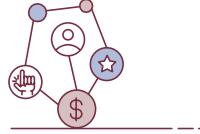
Supporting and growing liveable places, connected communities

Welcoming spaces, accessible health services, mental health support, improved community wellbeing, community-driven township plans, fostering partnerships, supporting volunteers, encouraging civic engagement, local laws that ensure safety and amenity.



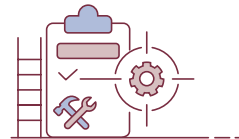
Preserving, promoting and enjoying the natural environment

Preserve and manage biodiversity, build community resilience, enhance responsiveness to natural disasters, support communities in adapting to climate change, proactive planning and collaboration, environmental sustainability, responsible waste practices, reducing landfill, sustainable practices.



Promoting a diversified, thriving economy

Growth and diversification of businesses, innovation, investment attraction, boosting tourism, stimulating economic activity, advocating for transport infrastructure, job creation, enhancing economic opportunity.



Planning and building infrastructure for current and future needs

Plan, build, and maintain essential infrastructure, focus on a reduction in communication black spots, support innovative and appropriate development and advocate for fair renewable energy development and access to critical water supplies.



Community-centric leadership and proactive service delivery

Provide a values-driven, inclusive culture with community central to all decision making, anticipating and solving issues, meaningful and transparent engagement, with strategic project delivery and continuous improvement.

Budget

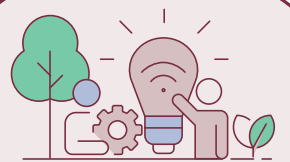
2025-26 DRAFT BUDGET

The 2025-26 Draft Budget has been developed via a transparent and thorough process. It aligns closely with the priorities outlined in the new Council Plan 2025-29 and the Council Vision.

A key feature of the Draft Budget is a significant capital works program, which includes major investments in road and bridge upgrades, drainage improvements, recreational facilities, and economic development projects.

Rate increases have been limited to three per cent, consistent with the Victorian Government's rate cap. As part of Council's efforts to create a fairer rating system across the Shire, the Vacant Land Rate has been consolidated into a single charge, rather than the existing three-rate structure. The Farm Rate has been readjusted and reduced over time.

Council remains committed to delivering value for money by providing high-quality services, maintaining essential infrastructure, and planning responsibly for the community's future needs.



Investing in what matters most

including roads, bridges, drainage, community facilities and a thriving economy.

AT A GLANCE



\$35.3 million
Total Budget allocation

Budget highlights



\$4,300,000
Beaufort Key Worker Accommodation Project



\$124,000
Beaufort Off-Lead Dog Park



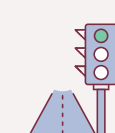
\$432,900
Restoring some of our 150 bridges some of which are over 50 years old

Rates

Residential rate increases have been limited to three per cent, consistent with the Victorian Government's rate cap.

Vacant land rates consolidated into one rate (instead of three separate rates)

Capital works program



\$2,555,068
Road upgrades



\$161,500
Drainage works



\$79,200
Recreation facilities



\$26,400
Libraries



\$52,800
Transfer station



IMPROVING ROADS AND BRIDGES

A safe and accessible road network is imperative for transport of goods and services produced in the Shire, both within the municipality and further afield.

Pyrenees Shire has 2,000 kilometres of road it must maintain and 150 bridges, of which 100 are more than 50 years old and some over 70 years old. Load limits have recently been placed on 25 of these bridges to help protect these valuable assets.

Road and bridge renewal is vital to the Shire which has a large rural population, including a substantial number of primary producers.

In the 2025-26 draft budget, \$2.5 million has been allocated to upgrade roads and \$432,900 for bridges, while a further \$161,500 has been set aside for drainage works.

Community Funding

COMMUNITY FUNDING PROGRAM 2025–2026
APPLICATIONS OPEN JULY

Council supports local community groups, organisations and businesses to deliver projects and activities that make Pyrenees an inclusive, happy, and healthy place to live and visit.

Grants and subsidies are available across a range of categories, including programs and activities, community and tourism events, equipment and minor capital works projects.

Recent successful applicants and projects include:

- \$6002** Landsborough and District Historical Group Inc railway station heritage signage program
- \$2000** Trawalla and District Recreation Reserve kitchen upgrade
- \$2000** Uniting Church Carngham, Snake Valley Heritage Month concert.

For more information on the funding application process and guidelines, visit: pyrenees.vic.gov/Community/Community-Funding-Program

BEAUFORT KEY WORKER ACCOMMODATION \$4.3 MILLION

Pyrenees Shire Council has successfully secured a \$3.4 million grant from the Regional Development Victoria (RDV) Regional Worker Accommodation Fund, with a \$900,000 co-contribution from Council for the project.

This fund is designed to support housing, accommodation, and related infrastructure projects across regional Victoria. Its goal is to attract and retain workers by making housing more affordable and accessible.

The Beaufort Key Worker Accommodation Project will involve building 10 new dwellings in Burke Street, offering a mix of 2-bedroom and 3-bedroom homes. This project will be crucial to attract and retain workers by providing stable accommodation for workers involved in key economic projects in Pyrenees Shire.



Pyrenees
Shire Council

Beaufort office:

5 Lawrence Street, Beaufort VIC 3373
Open Monday to Friday, 9am-5pm.

T: 1300 PYRENEES (1300 797 363)

E: pyrenees@pyrenees.vic.gov.au

pyrenees.vic.gov.au



Did you know Council has an online Engagement Hub?

Sign up to join the conversation and
download the latest updates.
Visit the website to see what's
happening across our Shire:
pyrenees.vic.gov.au

YOUR Councillors

Please reach out to your local Councillor
to discuss the issues that matter to you.

Mayor Cr Tanya Kehoe

T: 0439 571 480

E: mountemu@pyrenees.vic.gov.au



Cr Rebecca Wardlaw

T: 0458 704 011

E: avoca@pyrenees.vic.gov.au



Cr Damian Ferrari

T: 0437 662 295

E: beaufort@pyrenees.vic.gov.au



Cr Megan Phelan

T: 0461 523 580

E: decameron@pyrenees.vic.gov.au



Cr Simon Tol

T: 0473 628 938

E: ercildoune@pyrenees.vic.gov.au



Acknowledgement of Country

Pyrenees Shire is part of the traditional lands of the Wadawurrung, Dja Dja Wurrung, Eastern Maar and Wotjobaluk tribes. We pay our respects to the customs, traditions and stewardship of the land by the Elders past and present and emerging leaders, and the people of these tribes.